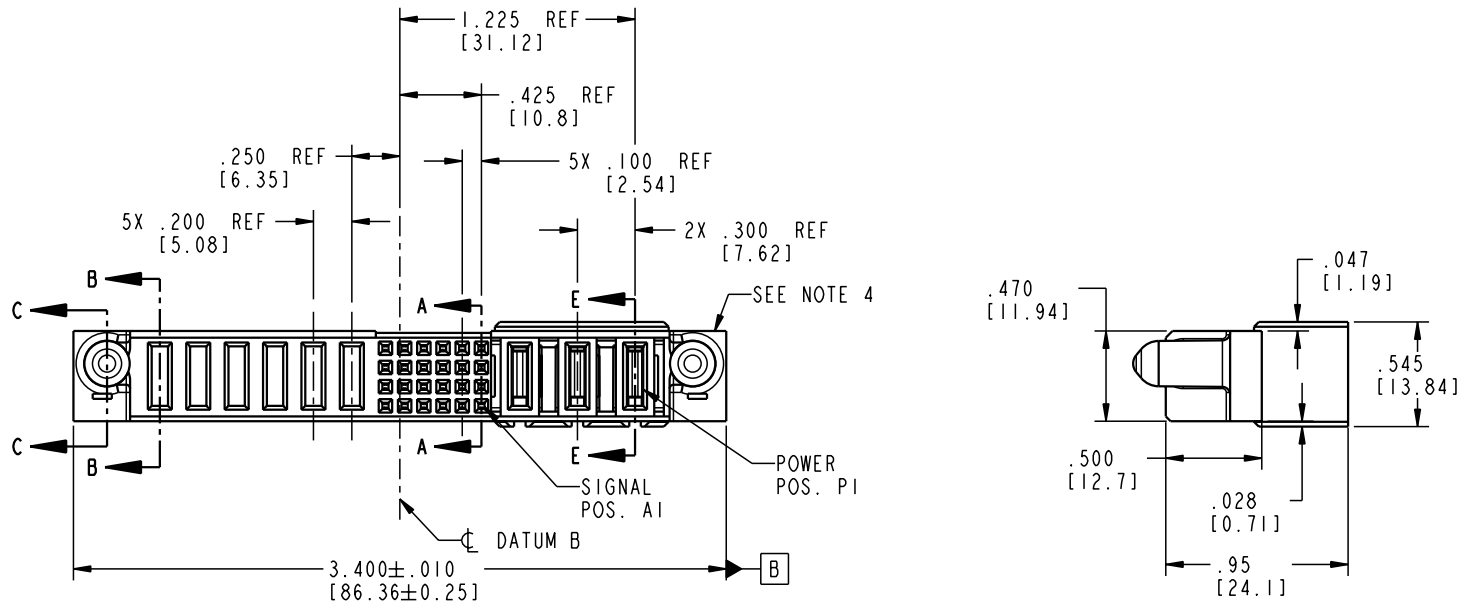
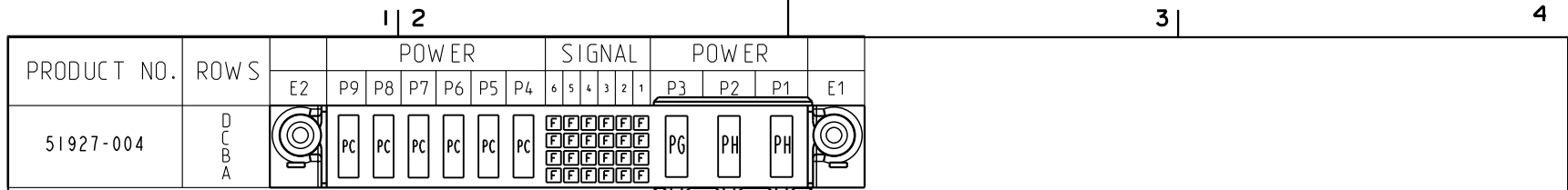


Tous droits strictement réservés. Reproduction ou communication o des liers interdite sous quelque forme que ce soit sans autorisation écrite du propriétaire. Propriete de c FCI. Droits de reproduction FCI.



All rights strictly reserved. Reproduction or issue to third parties in any form, whenever is not permitted without written authority from the proprietor. Property of FCI. Copyright FCI.



CODE	DIM "M" MATING LENGTH	CONTACT TYPE
F	N/A [N/A]	SIGNAL
PC	.042 [1.07]	POWER
PG	.042 [1.07]	POWER
PH	.092 [2.34]	POWER

mat'l code				SEE NOTE 2		tolerances unless otherwise specified		CUSTOMER		 www.fciconnect.com	
ltr	ecn no.	dr	date	linear	.XX±.01/0.X±0.3		COPY		 INCH/MM	title	
A	V03-1149	TAB	10/24/03		.XXX±.005/0.XX±0.13		projection			3ACP + 24S + 6P	
B	V03-1215	TAB	11/11/03		.XXX±.0020/0.XXX±0.051		 scale			VERTICAL PF RECEPT CABLE PORT	
C	V03-1223	TAB	11/14/03	angles	0° ± 2°		product family		PwrBlade		
				dr	T. BRUNGARD	10/24/03	size		dwg no		
				engr	M. GRAY	10/24/03	A		51927-004		
				chr	M. GRAY	10/24/03	sheet		213		
				appd	M. GRAY	10/24/03	1 of 4				
sheet index		revision sheet		C	C	C	C	cage code		22526	
1		2		3	4			3		4	

Pro/E

PDM: Rev:C

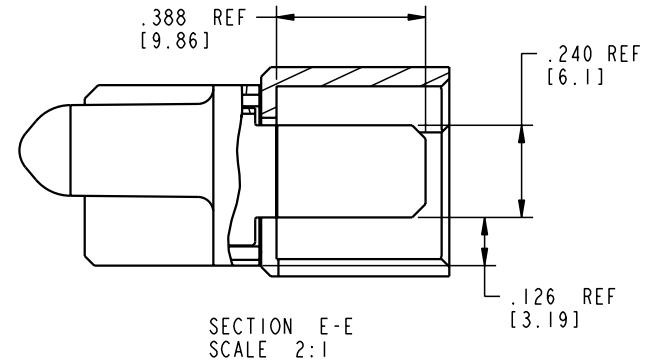
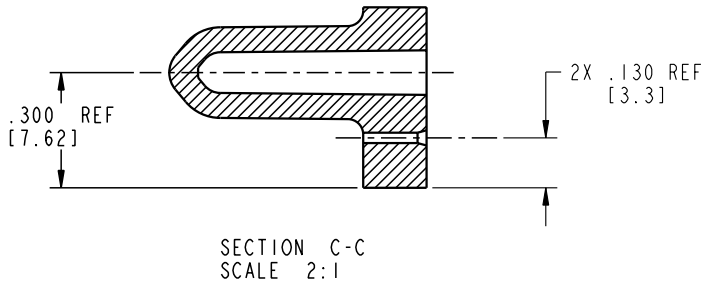
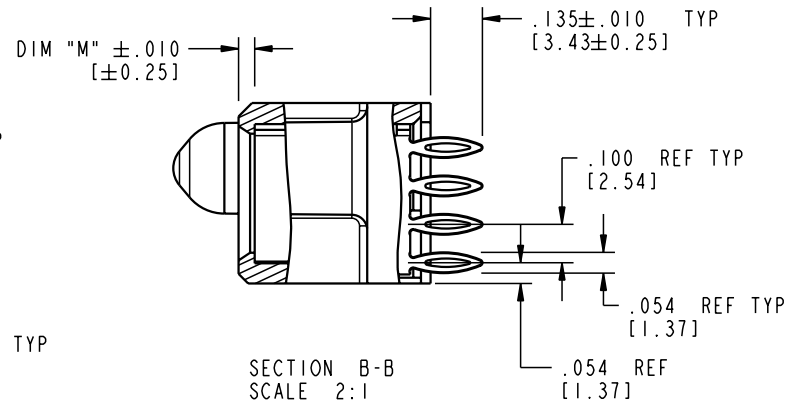
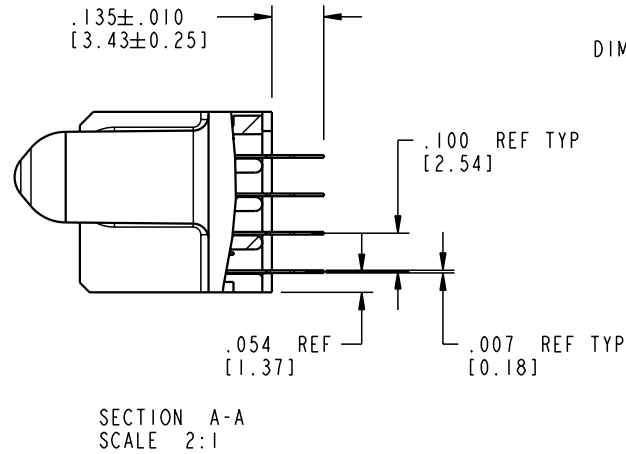
STATUS: Released

Printed: Aug 15, 2007

Tous droits strictement réservés. Reproduction ou communication a des tiers interdite sous quelque forme que ce soit sans autorisation écrite du propriétaire. Propriété de c FCI. Droits de reproduction FCI.

All rights strictly reserved. Reproduction or issue to third parties in any form whatever is not permitted without written authority from the proprietor. Property of FCI. Copyright FCI.

PRODUCT NUMBER  
51927-004



mat'l code				SEE NOTE 2		tolerances unless otherwise specified		CUSTOMER		 www.fciconnect.com			
ltr	ecn no.	dr	date	linear	.XX±.01/0.X±0.3		COPY		 title 3ACP + 24S + 6P VERTICAL PF RECEPT CABLE PORT				
C					.XXX±.005/0.XXX±0.13		projection						
					angles	.XXXX±.0020/0.XXX±0.051		 INCH/MM		product family			
						0°±2°				PwrBlade		code	
										scale		213	
sheet index		revision sheet		dr	T. BRUNGARD	10/24/03	1:1		sheet				
				enr	M. GRAY	10/24/03			2 of 4				
				chr	M. GRAY	10/24/03							
				appd	M. GRAY	10/24/03							

cage code 22526

Pro/E

PDM: Rev:C

STATUS: Released

Printed: Aug 15, 2007

Tous droits strictement reserves. Reproduction ou communication a des tiers interdite sous quelque forme que ce soit sans autorisation écrite du propriétaire. Propriete de c FCI. Droits de reproduction FCI.

**A**  
**FCI**

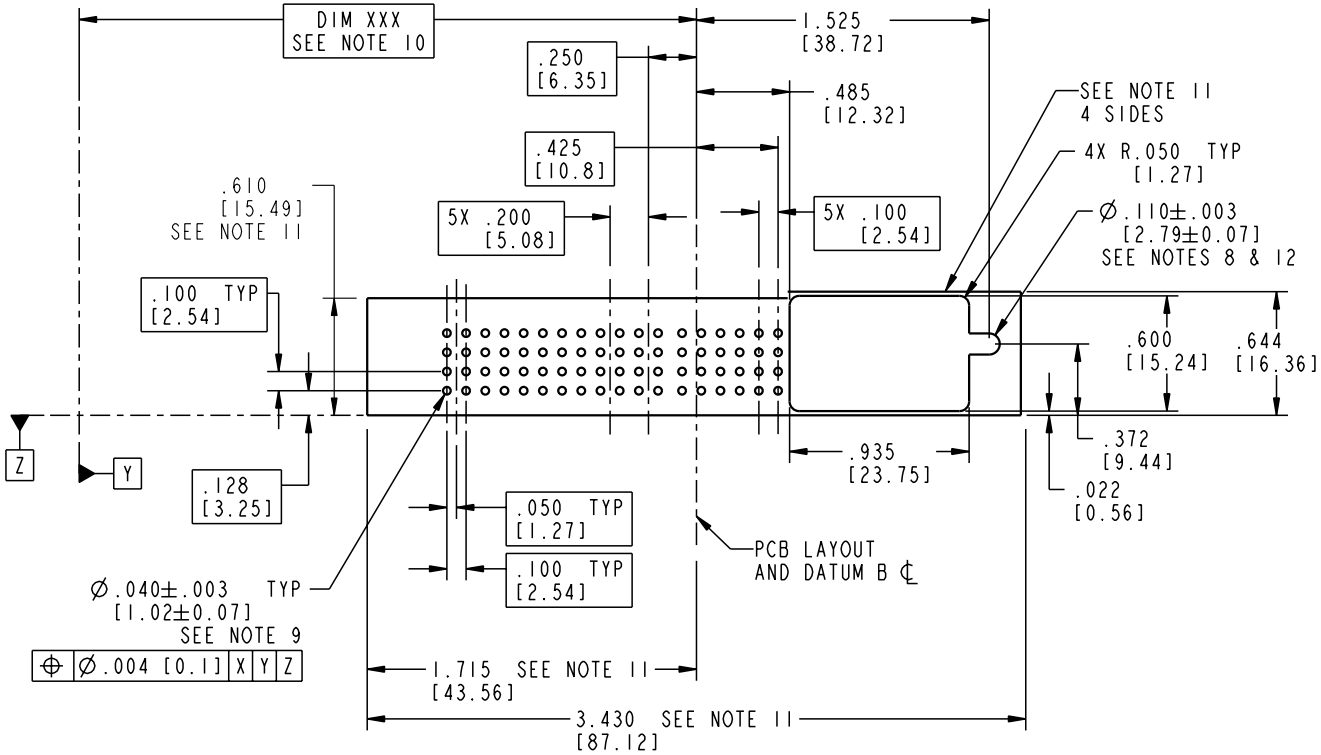
All rights strictly reserved. Reproduction or issue to third parties in any form whatever is not permitted without written authority from the proprietor. Property of FCI. Copyright FCI.

A

**A**  
**FCI**


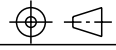
B

PRODUCT NUMBER  
51927-004



A

B

mat'l code				SEE NOTE 2		tolerances unless otherwise specified		CUSTOMER		 www.fciconnect.com	
ltr	ecn no.	dr	date	linear	.XX±.01/0.X±0.3	projection	COPY		title		
C				angles	.XXX±.005/0.XX±0.13		3ACP + 24S + 6P		VERTICAL PF RECEPT CABLE PORT		
				dr	.XXX±.0020/0.XXX±0.051	INCH/MM	product family		PwrBlade		code
				engr	T. BRUNGARD 10/24/03	scale	size		dwg no		sheet
				chr	M. GRAY 10/24/03	1:1	A		51927-004		213
				appd	M. GRAY 10/24/03						3 of 4
sheet index		revision sheet									

cage code 22526

Pro/E

PDM: Rev:C

STATUS: Released

Printed: Aug 15, 2007

Tous droits strictement réservés. Reproduction ou communication o des tiers interdite sous quelque forme que ce soit sans autorisation écrite du propriétaire. Propriete de c FCI. Droits de reproduction FCI.

**A**  
**FCI**

All rights strictly reserved. Reproduction or issue to third parties in any form, whenever is not permitted without written authority from the proprietor. Property of FCI. Copyright FCI.

**A**

**B**

PRODUCT NUMBER  
**51927-004**

NOTES:

1. DIMENSIONS AND TOLERANCES ARE IN ACCORDANCE WITH ASME Y14.5M, 1994 UNLESS OTHERWISE SPECIFIED.

CONNECTOR NOTES:

② HOUSING MATERIAL: UL 94 V-0 GLASS FILLED  
HIGH-TEMP THERMOPLASTIC  
POWER CONTACT MATERIAL: COPPER ALLOY  
SIGNAL PIN MATERIAL: COPPER ALLOY

3. PLATING:  
SIGNAL PINS: 30u"/0.76um Au OVER 50u"/1.27um Ni  
POWER CONTACTS: 50u"/1.27um Ni UNDER ALL WITH 30u"/0.76um Au ON CONTACT AREA AND SnPb ON PCB INTERFACE

④ MANUFACTURER'S NAME, P/N, AND DATE CODE TO APPEAR ON THIS SURFACE.  
5. PRODUCT SPECIFICATION GS-12-149.  
APPLICATION SPECIFICATION BUS-20-067.

6. PACKAGED IN TRAYS.

PCB NOTES:

7. ALL HOLE DIAMETERS ARE FINISHED HOLE SIZE.

⑧ MOUNTING HOLES, WHERE APPLICABLE, ARE UNPLATED.


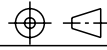
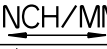
⑨  $\varnothing .0453 \pm .0010$  [1.151 ± 0.025] DRILLED HOLES PLATED WITH .0003 [0.008] MIN SnPb OVER .001 [0.03] TO .003 [0.08] Cu PLATING TO ACHIEVE  $\varnothing .040 \pm .003$  [1.02 ± .07] HOLE.

⑩ "DIM XXX" TO BE DETERMINED BY THE CUSTOMER.

⑪ CONNECTOR KEEP-OUT ZONE.

⑫ RECOMMENDED RETENTION TO PCB

$\varnothing .110$  [2.79] THRU HOLE FOR M2.5 SOCKET HEAD CAP SCREW, MAX HEAD  $\varnothing .177$  [4.50]  
RECOMMENDED SCREW LENGTH .472 [12.00] + PCB THICKNESS  
RECOMMENDED SCREW SEATING TO PCB TORQUE: 2-5 lbf-in (2300-5760 gf-cm).

mat'l code				SEE NOTE 2		tolerances unless otherwise specified		CUSTOMER		 <b>FCI</b> www.fciconnect.com	
ltr	ecn no.	dr	date	linear	.XX ± .01 / 0.X ± 0.3		COPY			title	
C					.XXX ± .005 / 0.XXX ± 0.13		projection			3ACP + 24S + 6P	
					.XXX ± .0020 / 0.XXX ± 0.051					VERTICAL PF RECEPT CABLE PORT	
				angles	° ± °		INCH/MM		product family		
				dr	T. BRUNGARD	10/24/03	scale		PwrBlade		
				engr	M. GRAY	10/24/03	1:1		code		
				chr	M. GRAY	10/24/03			size		
				appd	M. GRAY	10/24/03			dwg no		
sheet index		revision sheet						A		51927-004	
										sheet 213	
										4 of 4	

**A**

**B**

1 | 2

3 |

4

1 | 2

Pro/E

3 |

cage code 22526

4